

How to complain about social care services



How to complain about adult social care services

Stage 1:

Hammersmith & Fulham



FREEPOST RRZG-XZCU-CGAE
Tri-Borough Adult Social Care 4th Floor,
77 Glenthorne Road
London W6 0LJ

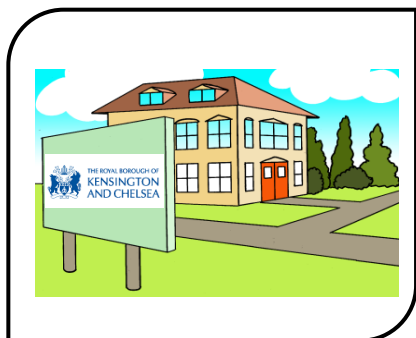


0800 587 0072 or 020 8753 5339



ASCCustomerFeedback@lbhf.gov.uk

Kensington & Chelsea



FREEPOST RRZG-XZCU-CGAE
Tri-Borough Adult Social Care 4th Floor,
77 Glenthorne Road
London W6 0LJ



0800 587 0072 or 020 7361 2552



HSSCustomerCare@rbkc.gov.uk

Westminster



FREEPOST RRZG-XZCU-CGAE
Tri-Borough Adult Social Care
4th Floor, 77 Glenthorne Road
London W6 0LJ



0800 587 0072 or 020 7362 2661



ASCCustomerFeedback@Westminster.gov.uk



Local Government
OMBUDSMAN



Stage 2:

If you are still not happy, you can raise the complaint with the **Local Government Ombudsman**



PO Box 4771
Coventry
CV4 0EH



0300 061 0614 or 0845 602 1983



advice@lgo.org.uk

How to complain about children's, young people and family services

Stage 1:

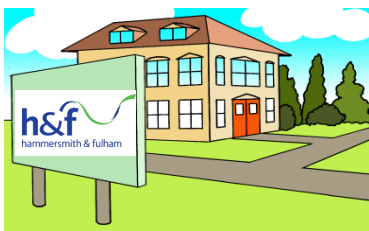
Hammersmith & Fulham



020 8753 5127



cscomplaints@lbhf.gov.uk



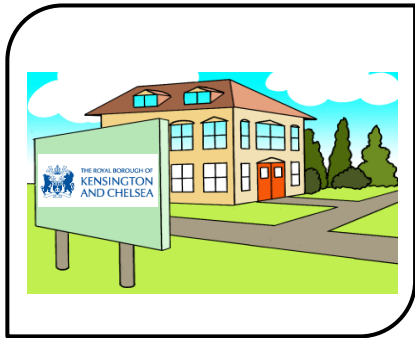
Kensington & Chelsea



0808 202 6210



Fcsresponseservice@rbkc.gov.uk



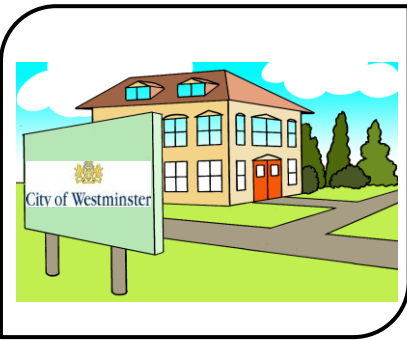
Westminster



0808 202 6210 or 020 7641 3482



Socialcarecomplaints@westminster.gov.uk



Stage 2:

If you are still not happy, you can raise the complaint with the **Local Government Ombudsman**

Local Government
OMBUDSMAN



PO Box 4771
Coventry
CV4 0EH



0300 061 0614 or 0845 602 1983



advice@lgo.org.uk

